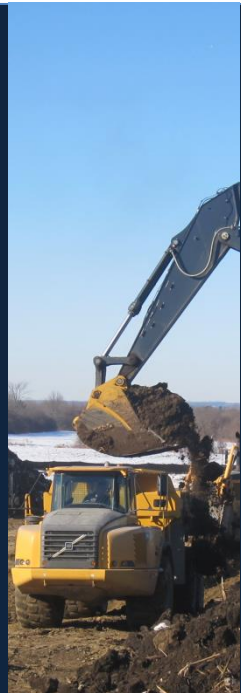
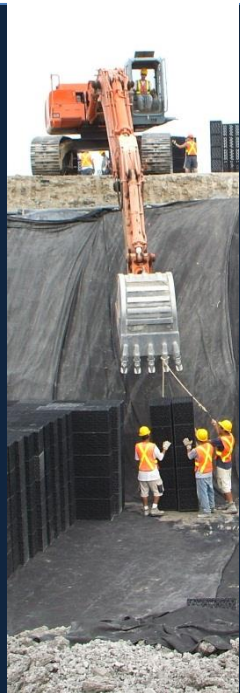


J. Jenkins & Son Limited



Earth Works and Grading
Topsoil Stripping & Removal
Site Preparation

CONTENTS

Current & Previous Projects.....	1
Equipment.....	2
Bank, Bonding, Insurance, WSIB.....	3
References.....	4

CURRENT & PREVIOUS PROJECTS

Description	Client / Owner	Value	Year
Angus Glen The 6 th B (Condominium)	Kylemore Homes	\$325,000	In Progress
Forest Hill Subdivision	Niran/Heathwood Homes	\$715,000	2015
Underground Services and for Frontage St. and Birchmount Rd. Realignment	Ruland Properties	\$931,000	2015
Carousel Pavilion Site Grading and Underground Services	Neamsby Ltd.	\$300,000	2015
Block 11 (Subdivision)	Nine Ten Ltd.	\$1,120,000	2015
Angus Glen The 6 th A (Condominium)	Kylemore Homes	\$975,000	2015
Angus Glen- Ph. 3 (Subdivision)	Kylemore Homes	\$900,000	In Progress
Charles White Cul De Sac (Subdivision)	York Wood Homes	\$300,000	2014
Ajax Audley Ph. 5 (Subdivision)	Sundial Homes	\$800,000	2014
Tottenham Phase 1 (Subdivision)	Ballymore Homes	\$650,000	2013
Sharon West (Subdivision)	Sundial Homes	\$2,500,000	2014
Oak Knoll Residential Subdivision	Baif Developments	\$1,600,000	2013
Markham Centre – Block 6	Times Group Corp.	\$2,400,000	2012
Hoover Thirty Developments (Subdivision)	Fieldgate Homes	\$1,200,000	2011
Nexus Buildings E and F	Remington Homes	\$1,200,000	2011
Times Market Square	Times Group Corp.	\$500,000	2010
Peel Park Redevelopment	Town of Whitby	\$2,200,000	2010
Angus Glen – Phase 2 and Phase 3	Kylemore Communities	\$1,200,000	2010
Dufferin Transfer Station	City Of Toronto	\$500,000	2009
M5V Tower Condominiums	TAS Design Build	\$1,200,000	2009
Minto Skyy Condominiums	Minto	\$2,200,000	2009
Quinepepon Storm Water Management Facility	City of Mississauga	\$1,700,00	2009
Orchard Community Park	City of Burlington	\$1,330,000	2006
10 th Line Lands, Tresstown (Subdivision)	Fieldgate Developments	\$3,000,000	2004 – 2009
407 & Warden Development, Downtown Markham	The Remington Group	\$12,000,000	2004 – 2015

EQUIPMENT

Description	Make / Size
Excavator	Hitachi / 200
Excavator	Hitachi / 225
Excavator	Hitachi / 270
Excavator	Hitachi / 330
Excavator	Hitachi / 350
Excavator	Hitachi / 370
Excavator	Hitachi / 400
Excavator	Hitachi / 450
Excavator	John Deere / 450
Excavator	Hitachi / 600
Excavator	John Deere/650D
Excavator	John Deere/670D
Blade	TD-15
Blade	TD-20
Blade	TD-25
Blade	John Deere – 550
Blade	TD-8
Blade	700 W/P
Blade	John Deere – 850
Scraper	Cat 621
Loader	L-90
Loader	John Deere 244
Loader	John Deere 644
Loader	John Deere 744
Loader	John Deere 844
Loader	L -150
Loader	L-120
Rubber Tire Backhoe	John Deere 310
Compactor, Smooth Drum	84"
Compactor, Sheepsfoot	84" / 66"
Rock Trucks	Volvo, A30
Dump Trucks	Tri-Axle
Dump Trucks	Tandem

BANK, BONDING, INSURANCE, & WSIB

- 1) **Bank:** TD Canada Trust
Beaver Creek CBC
Richmond Hill, ON

Account Manager: Tim Brown, (905) 836 – 5949
- 2) **Bonding:** Trisura Guarantee Insurance Company
Broker/Agent: Jones DesLauriers
- 3) **Insurance:** Dominion of Canada
Broker/Agent: Jones DesLauriers
- 4) **WSIB** Firm No.: 210164ET
Account No.: 6408702
- 5) **G.S.T.** R102654266

REFERENCES

1. **The Remington Goup**
Contact: **Bob Janiszewski / Chris Janizewski**
t. 416.771.6474
e. bob@remingtongroupinc.com

2. **The Remington Group**
Contact: **Todd Myles – Project Manager**
t. 905.761.8200 ext.264
e. tmyles@remingtongroup.com

3. **Kylemore Communities**
Contact: **Frank Spaziani P. Eng - Vice President**
t. 905.887.0090 ext: 407
e. fspaziani@angusglen.com

4. **Sabourin and Kimble and Associates Ltd.**
Contact: **Krista Boyce P. Eng**
t. 905.426.9541
e. kboyce@skaengineering.com

5. **Life Construction**
Contact: **Kamran Hajebi**
t. 416.990.0043
e. kamran@timesgroupcorp.com

6. **MMM Group Limited**
Contact: **Derek Lamb C.E.T – Project Manager**
t. 905-882-4211
e. lambd@mmm.ca

7. **Matson McConnell Ltd.**
Contact: **Rick McConnell P. Eng**
t. 416-348-0077
e. rmcconnell@mmland.ca